

# ROSSINI'S CINDERELLA

LA CENERENTOLA

AT  
**SUGAR CREEK SYMPHONY AND SONG**  
AN OPERA AND CLASSICAL MUSIC FESTIVAL  
WATSEKA, IL AUG. 5-7, 2005



DAVID ALLEN & SONS  
HARROW  
BELFAST - LONDON  
MANCHESTER  
© 2005 ALLEN

42

# OPERA & CLASSICAL MUSIC FESTIVAL AUGUST 5-7, 2005

## ROSSINI'S CINDERELLA

Just 90 miles south of  
Chicago in Watseka, Illinois

PRODUCED IN PART THROUGH  
THE GENEROUS SUPPORT OF  
First National Bank of Gilman & Watseka,  
Iroquois Federal, First Trust and Savings Bank  
of Watseka and Clifton, WGFA 94.1 FM &  
AM 1360, WVLI FM 95.1 The Valley, WHPO  
101 Country 100.9 FM, Chicago Title, Iroquois  
Title, the Sumner National Bank of Sheldon,  
and Speckman Realty, Inc. GMAC. Travel  
Discoveries is the official travel agent of Sugar  
Creek Symphony & Song.



# ROSSINI'S CINDERELLA

WATSEKA, IL

SUGAR CREEK SYMPHONY AND SONG

AUG. 5-7, 2005



Come see Cinderella meet her Prince at the 3rd annual Sugar Creek Symphony & Song opera and classical music festival from Aug. 5-7 in Watseka, Illinois!

## ROSSINI'S CINDERELLA (LA CENERENTOLA)

TICKETS \$25-\$70

Opening Night, Friday, August 5 at 8:00 P.M.  
Matinee, Sunday, August 7 at 2:00 P.M.  
The Glenn Raymond Auditorium  
101 W. Mulberry St., Watseka, Illinois

## THE TASTE AT SUGAR CREEK SYMPHONY & SONG

Come taste the best of home country cooking!  
Saturday, August 6, 10:00 A.M. to 5:00 P.M.  
Lawn of the Old Courthouse Museum  
103 W. Cherry St., Watseka, Illinois

## HISTORICAL LEGENDS

See historical legends come to life in monologues of the area's most colorful and intriguing personalities.  
Sat., Aug. 6, one-hour shows throughout the day  
The Courtroom at the Old Courthouse Museum  
103 W. Cherry St., Watseka, Illinois

## GOLFING AT SHEWAMI

Top off the festival with a round of golf!  
Saturday & Sunday, August 6-7, all day  
\$33 per player, includes cart fee. Located just off  
Route 24, east of Watseka on Golf Road. Call the  
Pro at (815) 429-3769 for reservations & info.

**QUESTIONS?** Contact John Whitman, executive director, at (917) 304-7015, or send him an email at [jwhitman@sugarcreekfestival.org](mailto:jwhitman@sugarcreekfestival.org).



**GETTING THERE** Watseka is located just 90 miles south of downtown Chicago on the intersection of Routes 1 & 24. If traveling along Interstate 57, take the Gilman, Ill., exit and proceed east on Route 24. Follow Route 24 for 14 miles to Watseka. If traveling via I-65 through Indiana, exit at Remington, Ind., onto Route 24. Head west 32 miles until reaching Watseka.

**GETTING TICKETS** Call the Sugar Creek Box Office at Travel Discoveries in Watseka at (815) 432-6121 or email [tickets@sugarcreekfestival.org](mailto:tickets@sugarcreekfestival.org). Tickets also available through Ticket Web at [www.ticketweb.com](http://www.ticketweb.com) or by phone at (866) 468-3401.

## SATURDAY EVENING SYMPHONY

Mendelssohn's *Midsummer's Night Dream Overture*  
Copland's *Appalachian Spring* and *Old American Songs* (nos. 1-4) with baritone Christopher Hutton  
Beethoven's *Symphony No. 7*

TICKETS \$15-\$35

Saturday, August 6 at 8:00 P.M.  
The Glenn Raymond Auditorium  
101 W. Mulberry St., Watseka, Illinois

## THE ART FAIR AT SUGAR CREEK SYMPHONY & SONG

Saturday, August 6, 10:00 A.M. to 5:00 P.M.  
Lawn of the Old Courthouse Museum  
103 W. Cherry St., Watseka, Illinois

## THE CAST OF LA CENERENTOLA



### ANTHONY WALKER CONDUCTOR

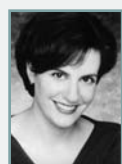
Anthony Walker stole our hearts last summer when he conducted *Roméo et Juliette*. He returns this summer not only conducting *La Cenerentola*, but also conducting Sugar Creek's first symphony concert, which features Beethoven's *Symphony No. 7*. Mr. Walker is a frequent guest conductor for Minnesota Opera, Hawaii Opera Theatre, Cincinnati Opera, and Pittsburgh Opera Center, among others. This season, Anthony made his New York City Opera debut conducting a new production of *Orlando* by Handel. Mr. Walker, originally from Australia, returns home often to conduct at Opera Australia and Pinchgut Opera.



### KRISTINE MCINTYRE STAGE DIRECTOR

Ms. McIntyre comes to Sugar Creek after directing *Il barbiere di Siviglia* at New York's Metropolitan Opera, where she is a member of the stage directing staff. Recently she directed *Lucia di Lammermoor* and *La traviata* for Portland Opera and Monteverdi's *Il ritorno d'Ulisse in patria* for the Pittsburgh Opera Center. She was on the staff of San Francisco Opera and has directed at Dallas Opera, Opera Pacific, and San

Diego Opera. Upcoming projects include directing *Luisa Miller* at the Met and *La traviata* on tour for the Met in Japan.



### LAYNA CHIANAKAS MEZZO-SOPRANO (CENERENTOLA)

Ms. Chianakas's voice has been described as "an appealing dark sound that seemingly knows no bound." She has performed such leading roles as Carmen in *Carmen*, Cenerentola in *La Cenerentola*, Rosina in *Il barbiere di Siviglia*, and Sesto in *Giulio Cesare*. She has performed with Cleveland Opera, Nashville Opera, Nevada Opera, Des Moines Metro Opera, Virginia Opera, and the Richard Wagner Bayreuth Festival. Ms. Chianakas was named Artistic Ambassador of the United States, performing in Colombia, Venezuela, El Salvador, Guatemala and Jamaica.



### MATTHEW LAU BASS (DON MAGNIFICO)

Mr. Lau became an audience favorite last year at Sugar Creek for his portrayal of Friar Laurence in our production of *Roméo et Juliette*. He returns this summer as the father of Cenerentola, Don Magnifico, a role he has performed with Kentucky Opera and Lake George Opera. Mr. Lau has an established career singing with such houses as Washington

Concert Opera, Lyric Opera of Chicago, New York City Opera, Opera Company of Philadelphia, Atlanta Opera, Portland Opera, and Sarasota Opera, among many others.



### ERIC SHAW TENOR (PRINCE, DON RAMIRO)

Eric Shaw's glorious high notes and ease of singing have recently been heard at the Wexford Festival in Ireland as Gaston in *Die Drei Pintos* by Weber/Mahler. His Italian debut in Bologna followed with his debut in Schubert's *Die Freunde Von Salamanca*. Recent engagements include the title role in *Candide* for Genoa and *The Seven Deadly Sins* by Weill for Calgary Opera. Mr. Shaw has often performed with Utah Opera, taking on such roles as Almaviva in *Il barbiere di Siviglia* and St. Briche in *The Merry Widow*. He has also performed with the American Symphony at Lincoln Center in New York.



### SHON SIMS BARITONE (DANDINI)

Shon Sims, long recognized for his vocal artistry and accomplished stagecraft, recently made his Houston Grand Opera debut as the Pilot in *The Little Prince*. He has performed the role of Figaro in Rossini's *Il barbiere di Siviglia* with Seattle Opera, New York

City Opera (National Company) and in his European debut with Teatro Nacional de San Carlos in Lisbon. He also recently appeared with Teatro dell'Opera di Roma and Teatro Massimo in Palermo. He recently performed the role of Dandini in *La Cenerentola* at Utah Festival Opera.



### ADELE KARAM SOPRANO (CLORINDA)

An audience favorite at Sugar Creek Symphony & Song, Adele Karam returns after singing Musetta in *La bohème* during our inaugural season in 2003! Critics have lauded Adele for her "entrancing comedic gifts" and "obvious flair for comedy." She previously performed the role of Clorinda at Cleveland Opera, where she was dubbed a "lovable lunatic." Recent engagements have included the role of Donna Elvira in *Don Giovanni* with the Teatro Lirico D'Europa in Martinique, and Josephine in *H.M.S. Pinafore* with Mississippi Opera.



### FENLON LAMB MEZZO-SOPRANO (TISBE)

Ms. Lamb continually receives excellent reviews throughout the country for her multifaceted portrayals of operatic characters such as Dorabella in *Così fan tutte*, which she has performed with the

Caramoor International Music Festival and Opera Santa Barbara, and Stephano in *Roméo et Juliette* with Cleveland Opera. She made her concert debut as Angelina/Cenerentola in *La Cenerentola* with the world renowned Cleveland Orchestra. She recently performed as the Beggar Woman in Cleveland Opera's production of *Sweeney Todd*. Upcoming engagements include Rosina in *Il barbiere di Siviglia* with Sacramento Opera.



### CHRISTOPHER HUTTON BARITONE (ALIDORO)

Christopher Hutton has had the pleasure to sing regularly with Boston Lyric Opera in a variety of roles, from Ali in *L'italiana in Algeri*, the Businessman in *The Little Prince*, and Zaretski in *Eugene Onegin*. Mr. Hutton has also sung such roles as Guglielmo in *Così fan tutte* with Asheville Lyric Opera, Dr. Falke in *Die Fledermaus* with Annapolis Opera, and Dancairo in *Carmen* with Opera Theatre of St. Louis. Last year, he sang the sword fighting role of Gregorio in Sugar Creek's *Roméo et Juliette*.

Cast subject to change. See the festival web site at [www.sugarcreekfestival.org](http://www.sugarcreekfestival.org) for more info on the performance and the festival.